

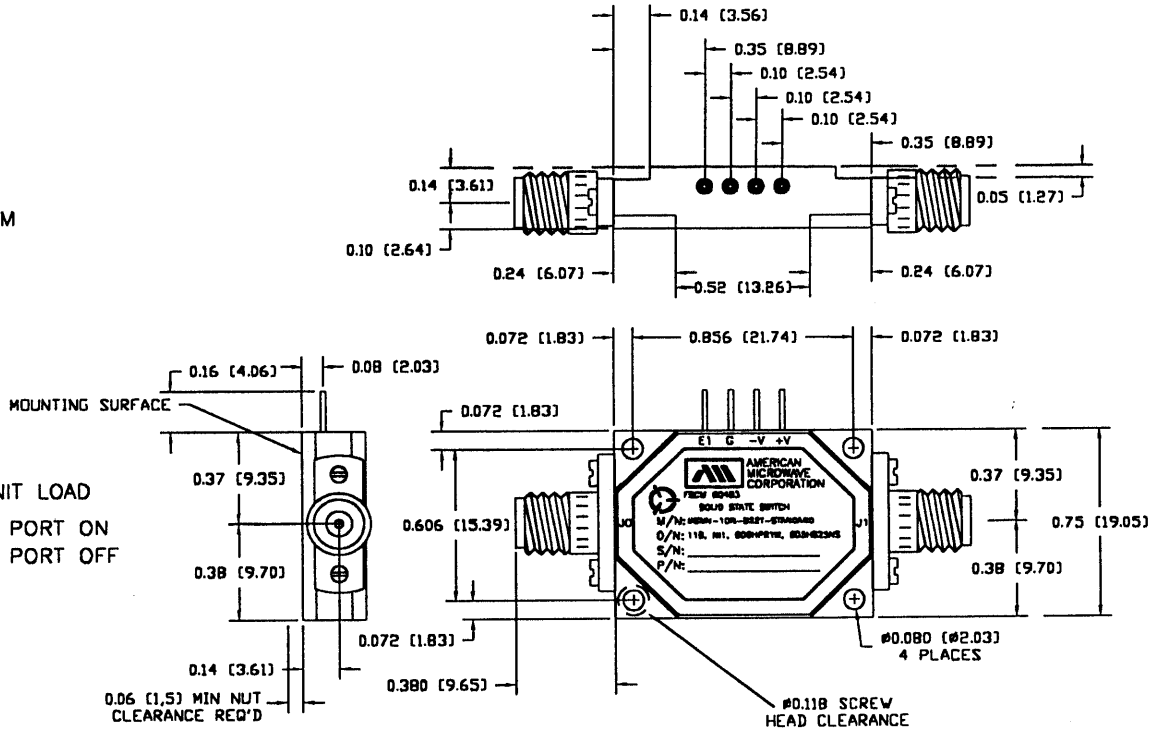
DESCRIPTION:

AMC MODEL MSNN-1DR-022T-STANDARD OPTION 118, NI1, B06HPR1W, B05HS25NS IS A HIGH SPEED, HIGH POWER, REFLECTIVE, SINGLE POLE SINGLE THROW SWITCH MODULE WITH LOW INSERTION LOSS, AND WITH INTEGRAL TTL DRIVER, DESIGNED FOR 1 GHz TO 18 GHz OPERATION.

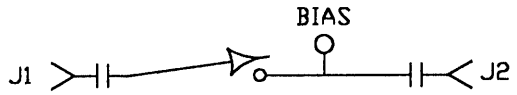
SPECIFICATIONS:

- FREQUENCY: 1 GHz TO 18 GHz
- INSERTION LOSS: 0.9dB @ 1-2, 2-4 GHz MAXIMUM
1.2dB @ 4-8 GHz MAXIMUM
1.6dB @ 8-12.4 GHz MAXIMUM
2.5dB @ 12.4-18 GHz MAXIMUM
- ISOLATION: 60dB @ 1-2 GHz MINIMUM
74dB @ 2-4 GHz MINIMUM
80dB @ 4-18 GHz MINIMUM
- VSWR: 1.4 @ 1-2, 2-4 GHz MINIMUM
1.75 @ 4-8, 8-12.4 GHz MINIMUM
2.0 @ 12.4-18 GHz MINIMUM
- SURVIVAL POWER: 2W AVG., 75W PEAK
(1 USEC MAX PULSE WIDTH)
- SWITCHING SPEED: RISE TIME: 10 NSEC MAXIMUM
FALL TIME: 10 NSEC MAXIMUM
ON TIME: 25 NSEC MAXIMUM
OFF TIME: 20 NSEC MAXIMUM
- POWER SUPPLY REQUIREMENT: +5V ± 5%, 65 mA
-12 TO -15V, 20 mA
- CONTROL INPUT IMPEDANCE: TTL, ADVANCED SCHOTTKY, ONE UNIT LOAD
- CONTROL LOGIC: LOGIC "0" (-0.3V TO +0.8V) FOR PORT ON
LOGIC "1" (+2.0V TO +5.0V) FOR PORT OFF
- OPERATING TEMP: -65°C TO +125°C
- CONNECTOR: SMA FEMALE
- SIZE: 1.0" x 0.75" x 0.24" (LxWxH)
- WEIGHT: 0.5 OUNCE TYPICAL

REVISIONS				
ZONE	REV.	DESCRIPTION	DATE	APPROVED
	-	ORIGINAL RELEASE	02/05/00	



BLOCK DIAGRAM



M/N = MANUFACTURER PART NUMBER
 O/N = OPTION NUMBER
 S/N = SERIAL NUMBER
 P/N = PART NUMBER

ENVIRONMENTAL RATINGS

- TEMPERATURE: -65°C TO +85°C (OPERATING)
-65°C TO +125°C (STORAGE)
- HUMIDITY: MIL-STD-202F, METHOD 103B COND. B
- SHOCK: MIL-STD-202F, METHOD 213B COND. B
- VIBRATION: MIL-STD-202F, METHOD 204D COND. B
- ALTITUDE: MIL-STD-202F, METHOD 105C COND. B
- TEMPERATURE CYCLE: MIL-STD-202F, METHOD 107D COND. A

ALL DIMENSIONS ARE IN MM
 TOLERANCES:
 X.XX ±0.020
 X.XXX ±0.010

NOTE: THE ABOVE SPECIFICATIONS ARE SUBJECT TO CHANGE OR REVISION

APPROVALS		DATE	AMERICAN MICROWAVE CORPORATION FREDERICK, MARYLAND	
DRAWN	WBCP	02/05/00	TITLE PRODUCT FEATURE MSNN-1DR-022T-STANDARD OPTION 118, NI1, B06HPR1W, B05HS25NS	
CHECKED	MA	2/13/01	SIZE	FSCM NO.
ISSUED	WD	2/13/01	A	60483
			DWG NO.	100-5267
			SCALE	N/S
			SHEET	1 of 3